

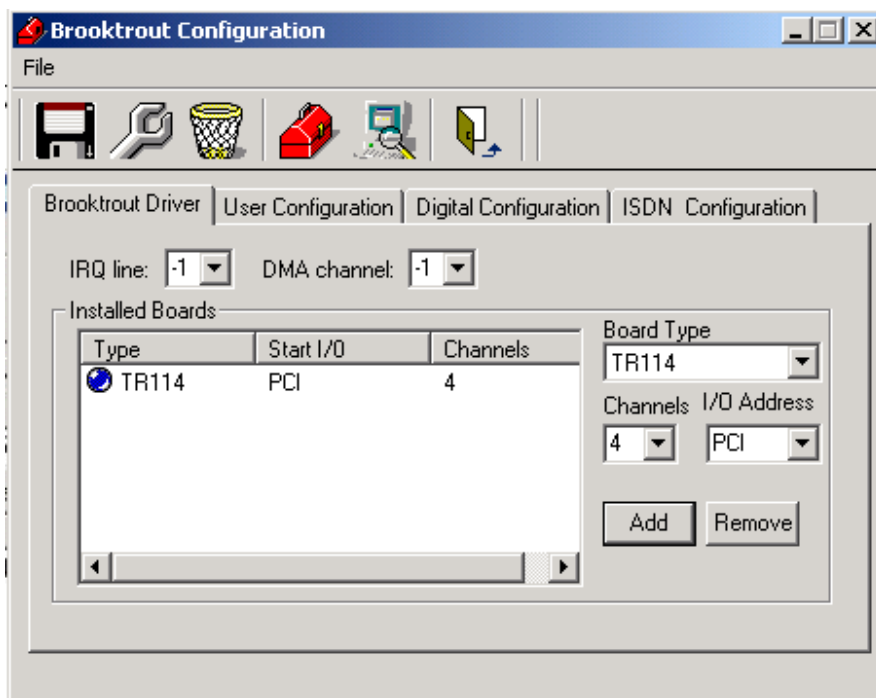


Setting up Brooktrout drivers for FAXport communications server

PCI boards:

- * Brooktrout drivers for FAXport need to be setup after FAXport communication server had been installed.

Windows NT 4:



Go to start-programs-FAXport-communication server-Brooktrout setup
Brooktrout configuration dialog will pop up:
On the Brooktrout driver tab you will need to fill in the following details:

IRQ line: for PCI select -1

DMA channel: select -1.

Board type: Select the board's model

Channel: select the number of ports (lines) the board supports.

I/O address: Select PCI for a PCI board.

Then click add



Go to the user configuration tab:
Select the country you are in. and change the dialing type to tone.

Then click on “install Brooktrout driver” button.

Then click on “save Brooktrout user configuration file” button.

And exit

To finish the installation you will need to boot the machine.

Windows 2000 / XP

The Brooktrout drivers for windows 2000 cannot be installed from the FAXport brooktrout setup program, it needs to be setup manually from FAXport CD

Open command prompt, go the FAXport CD, \support\brooktrout\bfx\install\ and run install.exe

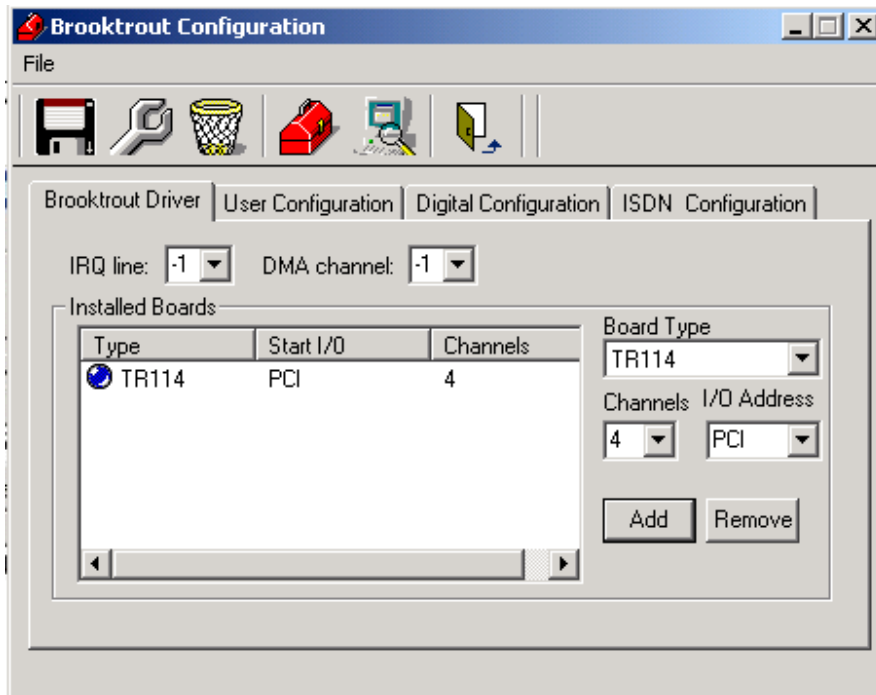
```
C:\WINDOWS\System32\cmd.exe
Microsoft Windows XP [Version 5.1.2600]
(C) Copyright 1985-2001 Microsoft Corp.

C:\Documents and Settings\Administrator>d:
D:\>cd faxport~1
The system cannot find the path specified.
D:\>cd faxpor~1
D:\FAXPOR~1>cd support\brooktrout\bfx\install
D:\FAXPOR~1\support\brooktrout\bfx\install>install
Installing Brooktrout Fax/Voice Device Driver Version 4.1.0
How many total fax & voice channels do you want to support(1-96, default 16): 4
What interrupt line will the ISA fax/voice boards use,
-1 if no ISA boards (default 5): -1
What DMA channel will the ISA fax/voice boards use,
-1 if no ISA boards or no DMA channel (default 1): -1
Kernel buffer size (default 8192):
Kernel interrupt queue size (default 10):
Enable debug code (y or n, default y):
Number of dump history entries (default 200):
Enable debug fifo logging (y or n, default n):
Configuring fax/voice driver:
    Number of channels 4
    Interrupt line -1
    Dma channel -1
    Buffer size 8192
    Interrupt queue size 10
    Debug: y, 200 0
Start the driver automatically at boot time? (y or n, default y):
Enter cmd line args for faxinit. Be sure to use full pathnames
for any files not residing in C:\WINDOWS\bfx [none]: -n
The C:\WINDOWS\bfx directory has been created.
The services named 'bfx' and 'faxinit' have been added to the registry.
The driver will be started at boot time, and the results of
faxinit will be in 'C:\WINDOWS\bfx\xfaxinit.log'.
To start the driver now, run 'net start bfx'. Then 'faxinit' (with path).
D:\FAXPOR~1\support\brooktrout\bfx\install>
```



Make sure you put the -n parameter in the last question that refers to faxinit parameter because that is the difference between NT4 and Windows 2000 installation, without the -n the Brooktrout drivers could not be loaded.

After you finish the cmd setup, you need to go to start-programs-FAXport -communication server-Brooktrout setup.



On the Brooktrout driver tab you will need to fill in the following details:

IRQ line: for a PCI board select -1.

DMA channel: select -1.

Board type: Select you board's model

Channel: select the number of ports (lines) the board supports

I/O address: for a PCI board select PCI

Then click add

Go to the user configuration tab:

Select the country you are in. and change the dialing type to tone.

Then press on "save Brooktrout user configuration file" button.

And exit

To finish the installation you will need to boot the machine.



ISA boards:

The Brooktrout drivers for windows 2000 cannot be installed from the FAXport brooktrout setup program, it needs to be setup manually from FAXport CD

Open command prompt, go the FAXport CD, \support\brooktrout\bfx\install\ and run install.exe

```
C:\WINNT\System32\cmd.exe - install
F:\FAXport_902\support\brooktrout\bfx\install>install
Installing Brooktrout Fax/Voice Device Driver Version 4.1.0
Brooktrout driver has been installed (or partially installed)
Do you want to overwrite the existing installation?
Overwrite? (y or n, default y): y
How many total fax & voice channels do you want to support(1-96, default 16): 4
What interrupt line will the ISA fax/voice boards use,
-1 if no ISA boards (default 5): 5
What DMA channel will the ISA fax/voice boards use,
-1 if no ISA boards or no DMA channel (default 1): -1
Kernel buffer size (default 8192):
Kernel interrupt queue size (default 10):
Enable debug code (y or n, default y):
Number of dump history entries (default 200):
Enable debug fifo logging (y or n, default n):
Configuring fax/voice driver:
    Number of channels 4
    Interrupt line 5
    Dma channel -1
    Buffer size 8192
    Interrupt queue size 10
    Debug: y, 200 0
Start the driver automatically at boot time? (y or n, default y):
Enter cmd line args for faxinit. Be sure to use full pathnames
for any files not residing in C:\WINNT\bfx [none]: faxinit.cfg_
```

Make sure you put the faxinit.cfg parameter in the last question that refers to faxinit parameter because that is required for ISA Brooktrout boards , without that parameter Brooktrout drivers could not be loaded.

Go to c:\winnt\bfx

Create a new txt file and name it faxinit.cfg, edit the file with notepad and add the board's addr:

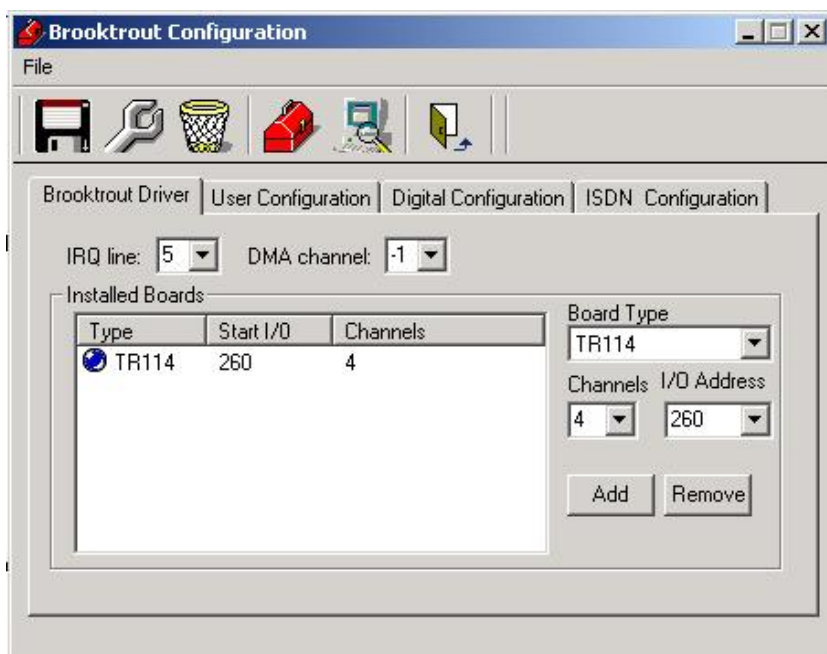
Example:

```
addrs 264 4
addrs 284 2
```

- * In this case there are 2 boards – I4L configured to I/O 260 and I2L configured I/O 280. The addrs should be always +4 (e.g. 260 will be 264)
- * The number 4 and 2 stands for the number of channels on the boards.



After you finish the cmd setup, you need to go to start-programs-FAXport -communication server-Brooktrout setup.



On the Brooktrout driver tab you will need to fill in the following details:

IRQ line: For ISA boards select the IRQ of the board (Default TR114 IRQ is 5).

DMA channel: select -1.

Board type: Select you board's model

Channel: select the number of ports (lines) the board supports

I/O address: For ISA boards select the I/O port of the board (Default I/O port for TR114 ISA board is 260).

Then click add

Go to the user configuration tab:

Select the country you are in. and change the dialing type to tone.

Then press on "save Brooktrout user configuration file" button.

And exit

To finish the installation you will need to boot the machine.